

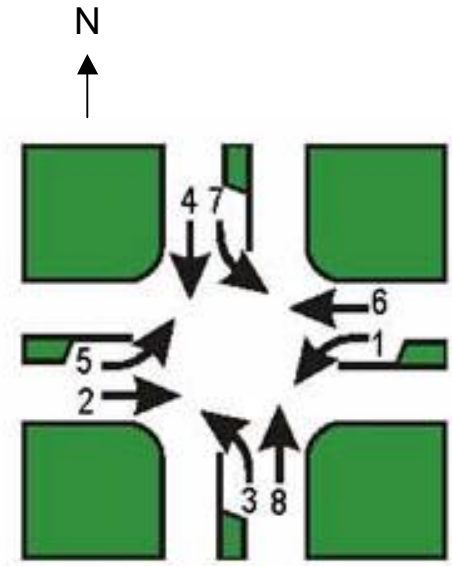


September 2012

A Strange Operation

Fifteen friends in eight different cars all got stuck at a traffic signal at the same time while on their way to the same party. Each approach to the intersection has one left turn lane and one lane that goes straight through. No two cars were in the same lane. Can you figure out which lane each person was in?

1. Theodora and Jeff+Ben, were heading north in the same car to pick up ice at 7-11 before going to the party. They were able to proceed through the intersection at the same time as Francine and Olivanne, who also rode together.
2. Branndon and Edduardo came together from the west and headed directly to the party.
3. None of the party goers made a right turn.
4. None of the four destinations, the 7-11, the grocery store, the liquor store, or the party, are in the same direction.
5. One vehicle went straight through the intersection from the east to go to the liquor store to pick up some rum.
6. Francine and Olivanne made a left turn. Dafneigh, who was one of only two people to ride alone (the other was Jaquelin), was on her way to one of the stores when she ran into the others at the intersection.
7. Sheridan and Winifred went through the intersection at the same time as Branndon and Edduardo.
8. Carolina and Dorothea headed to the grocery store together to grab some dip before the party. They went through the intersection at the same time as Gretchin and Maverick, who also rode together.



Lanes that can go at the same time:

- 1&5
- 2&6
- 3&7
- 4&8

This is a puzzle for the monthly bar event **Puzzled Pint**. The answer is the name of a bar where you can join us to solve more puzzles on the second Tuesday of this month (only valid for the month referenced in the above left image). Hints and more info are available at www.PuzzledPint.com.